
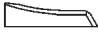

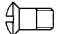
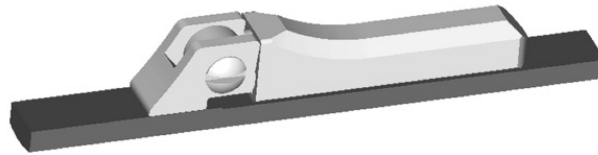


Δ delta 2,8 long
for metal frames

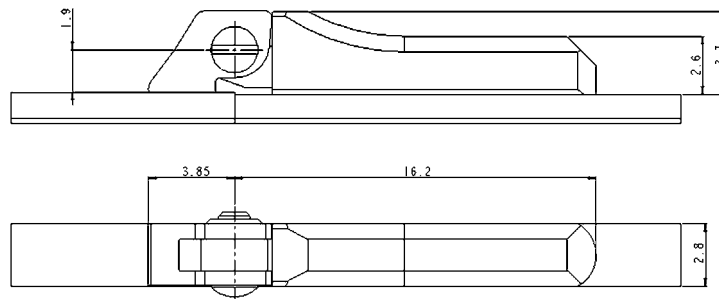
					
Front hinge	Housing	Gliding part	Screw		
07.1732	29.6083	08.1735	28.3154		
nickel silver Width: 2,75 mm	nickel silver Width: 2,8 mm Length: 14,5 mm	nickel silver	stainless steel		
setnumber	version	front hinge	housing	gliding part	screw
60.2818.1A.1	delta 2,8 long	07.1732	29.6083	08.1735	28.3154
Spring hinge double action, classic and reliable, to be soldered on a temple of 2,8 mm, small housing in version 14,5mm. Complete set with housing, front hinge, pre-assembled gliding part, screw					



System E18
Nickel Silver



E 18L - 2,8



Front hinge for Soldering

