



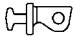

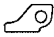

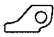


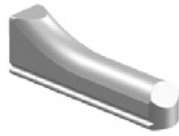
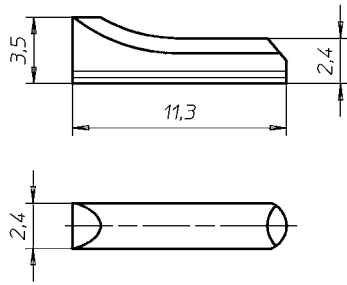
Δ delta 2,4

					
00.1076	29.6093200	soft 08.1749	28.3167 M1,4		
		strong 08.1744			
04.1604	29.6093000				
					
07.1743					
					
setnumber	version	front hinge	housing	gliding part	screw
60.2419.1B.5	delta 2,4 c 90° acetate	00.1076	29.6093200	08.1749	28.3167
60.2419.1B.4	delta 2,4 e 90° acetate	00.1076	29.6093000	08.1749	28.3167
60.2419.1C.2	delta 2,4 c combi	04.1604	29.6093200	08.1744	28.3167
60.2419.1C.1	delta 2,4 e combi	04.1604	29.6093000	08.1744	28.3167
60.2419.1A.2	delta 2,4 c metal	07.1743	29.6093200	08.1744	28.3167
60.2419.1A.1	delta 2,4 e metal	07.1743	29.6093000	08.1744	28.3167

Gliding part free of space, resistance against tearing out and twisting.

Housing c

29.6093200

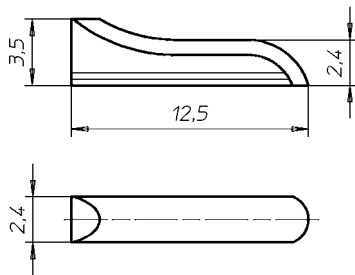


System E19

Stainless Steel Inside

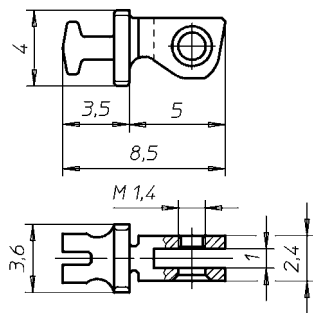
Housing e

29.6093000



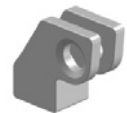
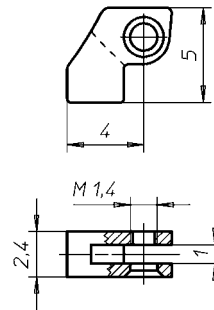
Front Hinge for Acetate 90°

00.1076



Front Hinge for Combination

04.1604



Front Hinge for Metal

07.1743

