


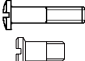
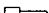


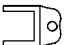

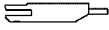
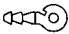
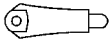


### Spring Hinge System E11 Sv

|  |  |  |  |  |  |         |         |
|---|---|---|--|---|---|---------|---------|
| 05.1700   | 07.1720<br>(horizontal)   |   | 28.2983<br>(horizontal)  |   | 29.6230<br>strong   |         |         |
|  |  |   |  |   |   |         |         |
| 00.1059   | 07.1721<br>(vertical)   | 29.6245   | 28.2929<br>(vertical)  | 29.3103   | 29.6232<br>soft   |         |         |
|  |  |   |  |   |   |         |         |
|  |  |   |  |   |   |         |         |
| setnumber   | version   | front hinge   | temple hinge   | spring  | screws  | pin     | spring  |
| 60.3511.2A.1  | E11 Sv metal  | 05.1700   | 07.1720/1721   | 29.6245   | 28.2983/2929  | 29.3103 | 29.6230 |
| 60.3511.2B.1  | E11 Sv acetate  | 00.1059   | 07.1720/1721   | 29.6245   | 28.2983/2929  | 29.3103 | 29.6232 |

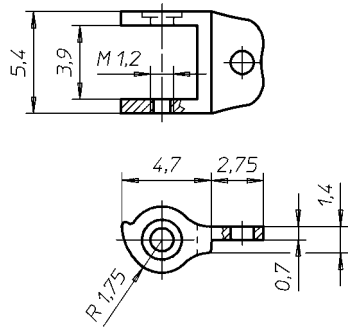
SYSTEM

**E11** Sv

5,4 mm

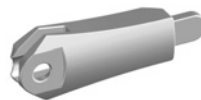
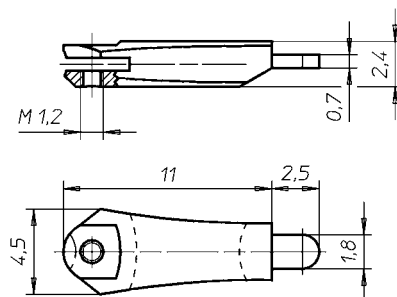
Temple Hinge horizontal

07.1720



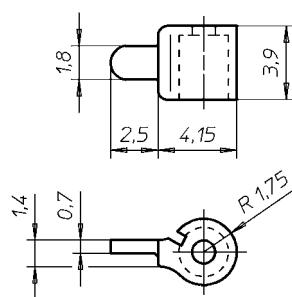
Temple Hinge vertical

07.1721



Front Hinge for Metal

05.1700



Front Hinge for Acetate

00.1059

