



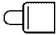

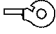


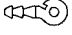


### Spring Hinge System E11

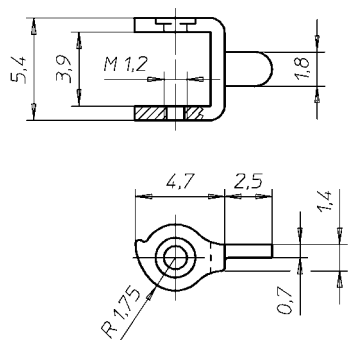
					
05.1700	07.1700	29.6245	28.2983		
					
					
00.1059					
					
					
setnumber	version	front hinge	temple hinge	spring	screw
60.3511.1A.1	E11 S metal	05.1700	07.1700	29.6245	28.2983
60.3511.1B.1	E11 S acetate	00.1059	07.1700	29.6245	28.2983

SYSTEM

**E11** Short  
5,4 mm

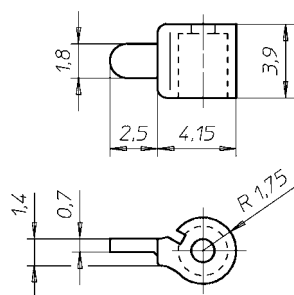
Temple Hinge

07.1700



Front Hinge for Metal

05.1700



Front Hinge for Acetate

00.1059

